

**LAND FOR SALE**  
**ANTELOPE VALLEY / SOUTH EAST KERN COUNTY**  
ADJACENT TO  
**CALIFORNIA STATE HIGHWAY 58**  
NEAR THE INTERCHANGE TO THE  
**NORTH GATE of EDWARDS AIR FORCE BASE**

---

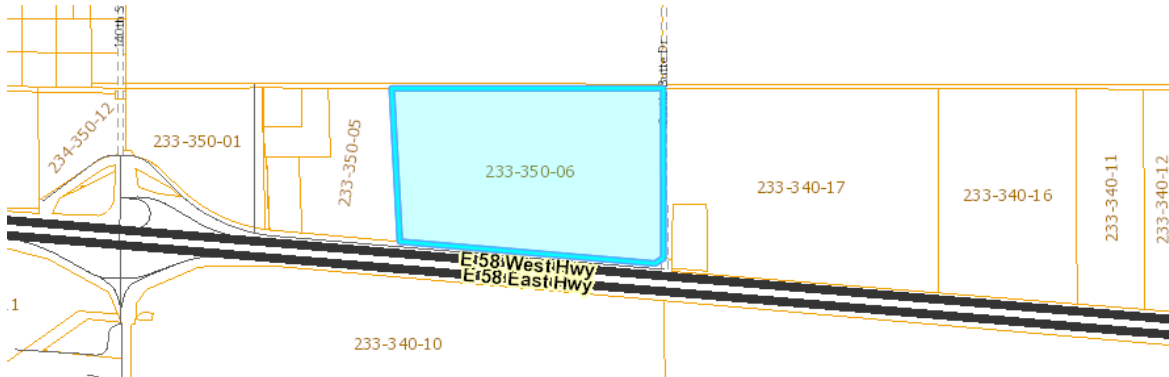
**SOLD**  
**97.85 Acres – APN 233-350-06**  
M-1 PD – Light Industrial – Precise Development Combining  
M-1 PD GH – Light Industrial – Precise Development – Geologic  
Hazard Combining

---

**Google Map**

The property is located between Highway 58's off-ramps to the  
North Gate to Edwards Air Force Base and to the community of North Edwards, CA

---



The property is one-half mile **EAST** of the Highway 58 off-ramp's intersection of  
140<sup>th</sup> Street with Desert Sage Avenue, North Edwards, CA.

The **south boundary**, about one-half mile long, is adjacent to the paved  
Highway 58 Frontage Road / Desert Sage Avenue.

The **north boundary** of the parcel is along Lorraine Avenue.

---



**Marilyn Johnson Prewoznik**

Realtor® / Broker

DRE # 00707863

(Seller is a California Licensed Real Estate Broker)

**INFO@NORTHGATECENTER.COM**

---

| General Information |  
| Zoning | Easements |